

Term 4

Explanations of assignments

(If you are in class, you would get more detailed explanation with powerpoints, demonstrations, examples and other methods of learning.)

Categories:

Assignments are in Blue

Turn in the in-shelf when you finish

Sketchbook entries are in Green

Turn the entire sketchbook to the turn in shelf on 04/21 & 05/12

Projects are in Purple

Turn in the in-shelf when you finish

Charts are in Orange

Glue them near the back of your sketchbook

Extra Credit is in Pink

Tape an extra credit form to the extra credit & turn into the shelf.

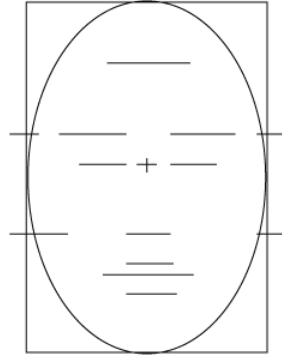
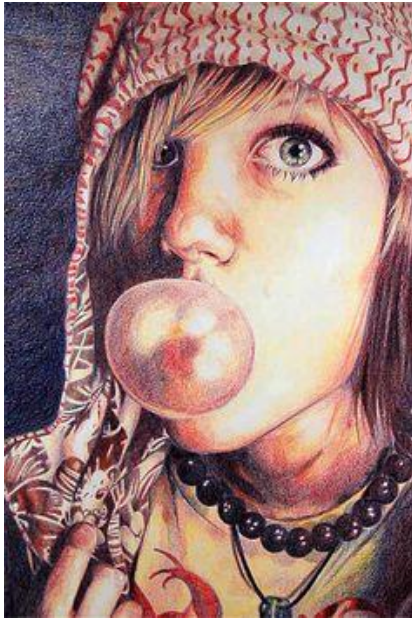
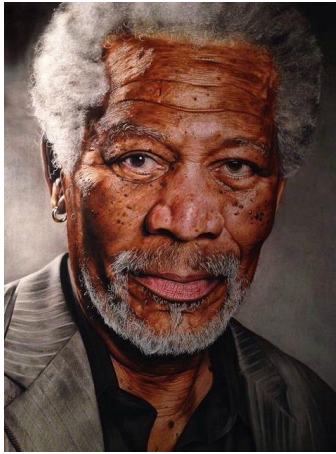
Charts

- **Informal assessments:** I will ask you at the end of class how productive you were. You will tell me: 5=definitely, 4=mostly, 3=somewhat, 2=not much, 0=not at all.
- **Cleaning:** At the end of class, you will ask another peer to observed that you cleaned your desk/mess and that you helped clean the class somehow; they will write their name in your chart for that day. You will get a score for this at the end of the term.

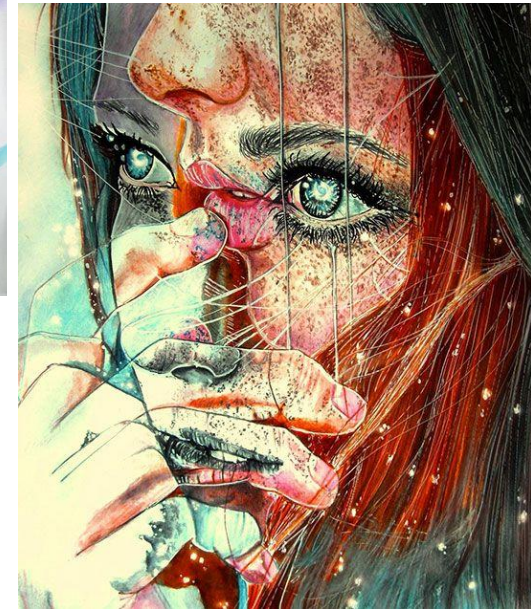
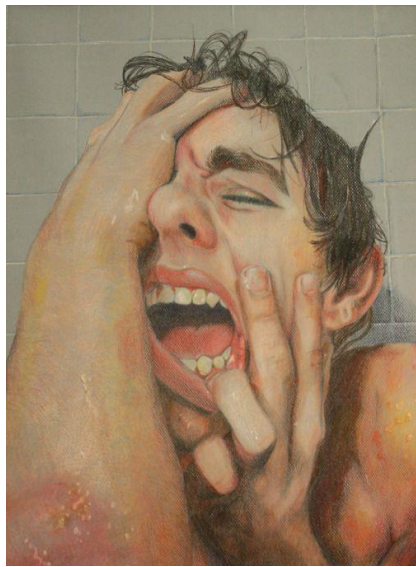
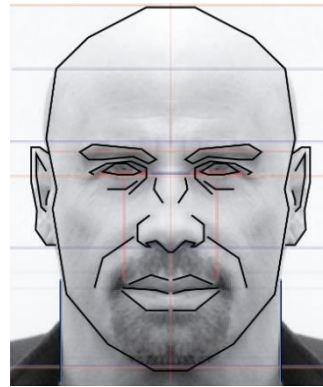
Extra Credit

- Go back to the website and click on extra credit options
- You can ONLY do the extra credit that is listed on the website.
- You can only earn up to 200 points extra credit
 - If I offer a specific assignment at the very end of the semester, that will not count as the 200 points.
- Approximately 1 minute of effort = 1 points.

Project: Draw a prismatic self portrait



- Begin with a 8" x 12" rectangle
- Draw an oval with simple light lines where the important features of the face will go.
- Observe in the mirror and draw the angles of the important features of the face
- Get creative with the face, composition, background, or in another way.



Prisma Color:

Name _____

Prisma Color: Color Chart

Light Red	Dull mid red	Dark red	Neutral red/green	Dull green	Dark green	Green-blue
Light Blue	Dull mid Blue	Dark blue	Neutral blue/orange	Dull Orange	Dark orange	Orange-yellow
Light Yellow	Dull mid yellow	Dark yellow	Neutral yellow/violet	Dull violet	Dark violet	Violet-red

Duplicate these boxes. These are color variations you can use for coloring skin

Matching Quiz:

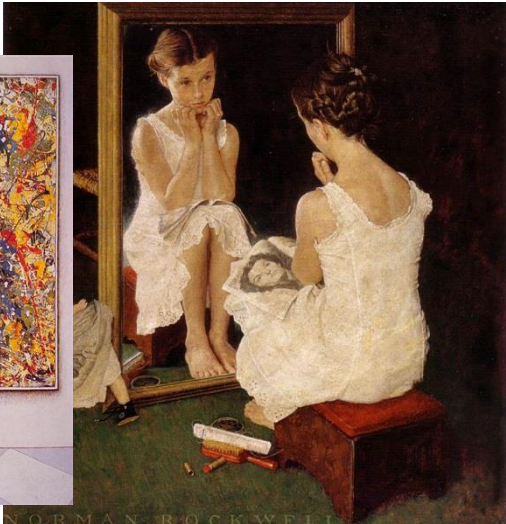
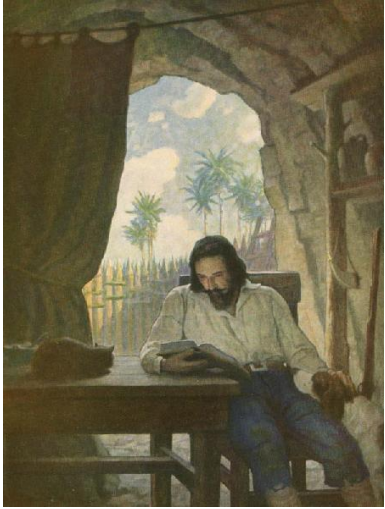
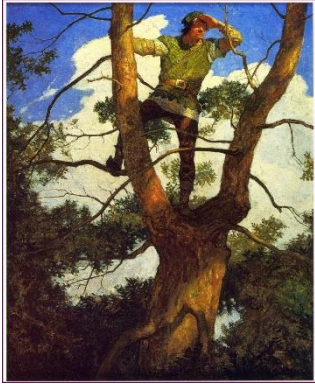
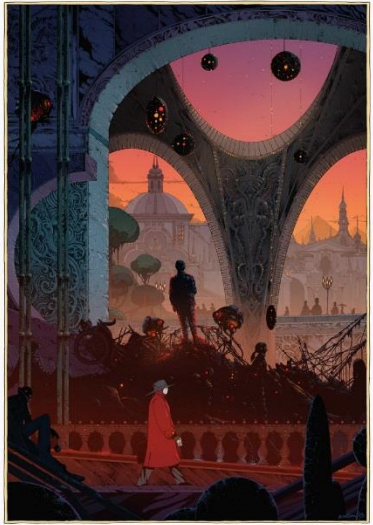
1. ____ What do you add to make a color duller, or neutral?	a. Identify color
2. ____ What do you add to make a color darker?	b. dull
3. ____ What do you add to make a color lighter?	c. yes
4. ____ Are most colors intense, or dull when observing reality?	d. white, baby oil, <u>burnisher, prisma color blender</u>
5. ____ When duplicating reality would you almost always mix the color with the complementary color?	e. white
6. ____ What is the complement of red?	f. dark
7. ____ What is the complement of blue?	g. green
8. ____ What is the complement of yellow?	h. thick & blended
9. ____ What should you do first when you are observing a color and trying to duplicate it correctly?	i. complementary color
10. ____ What value do you layer first?	j. violet
11. ____ What texture should be layered first?	k. complementary color & bit of black
12. ____ What should the finished texture look like?	l. thin
13. ____ What helps to make a blended look?	m. orange

#16 Emotion word & imagination

- Think of an emotion that you want to express
- Write that word on your paper in a disguised way
- Turn your lines into something imaginative that describes the word
- Demo was during class

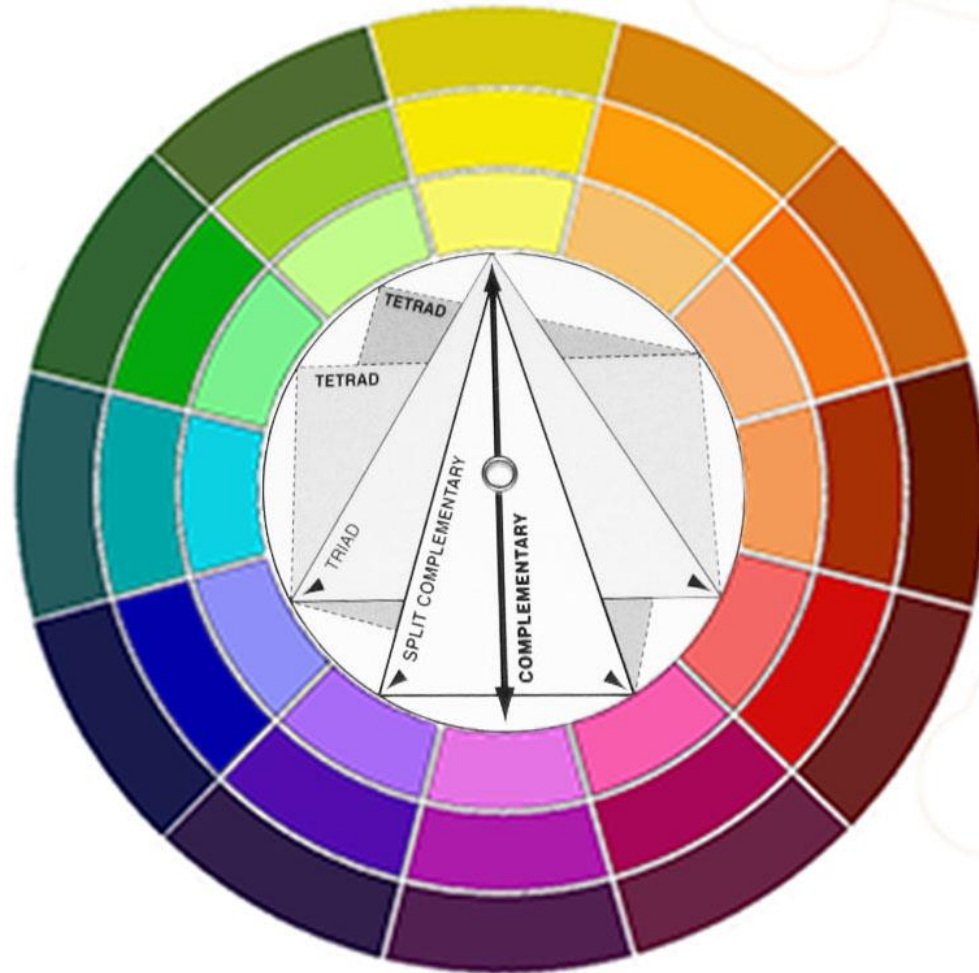
#17 Drawing with frames

- Draw a sketch of something that is framed with images.



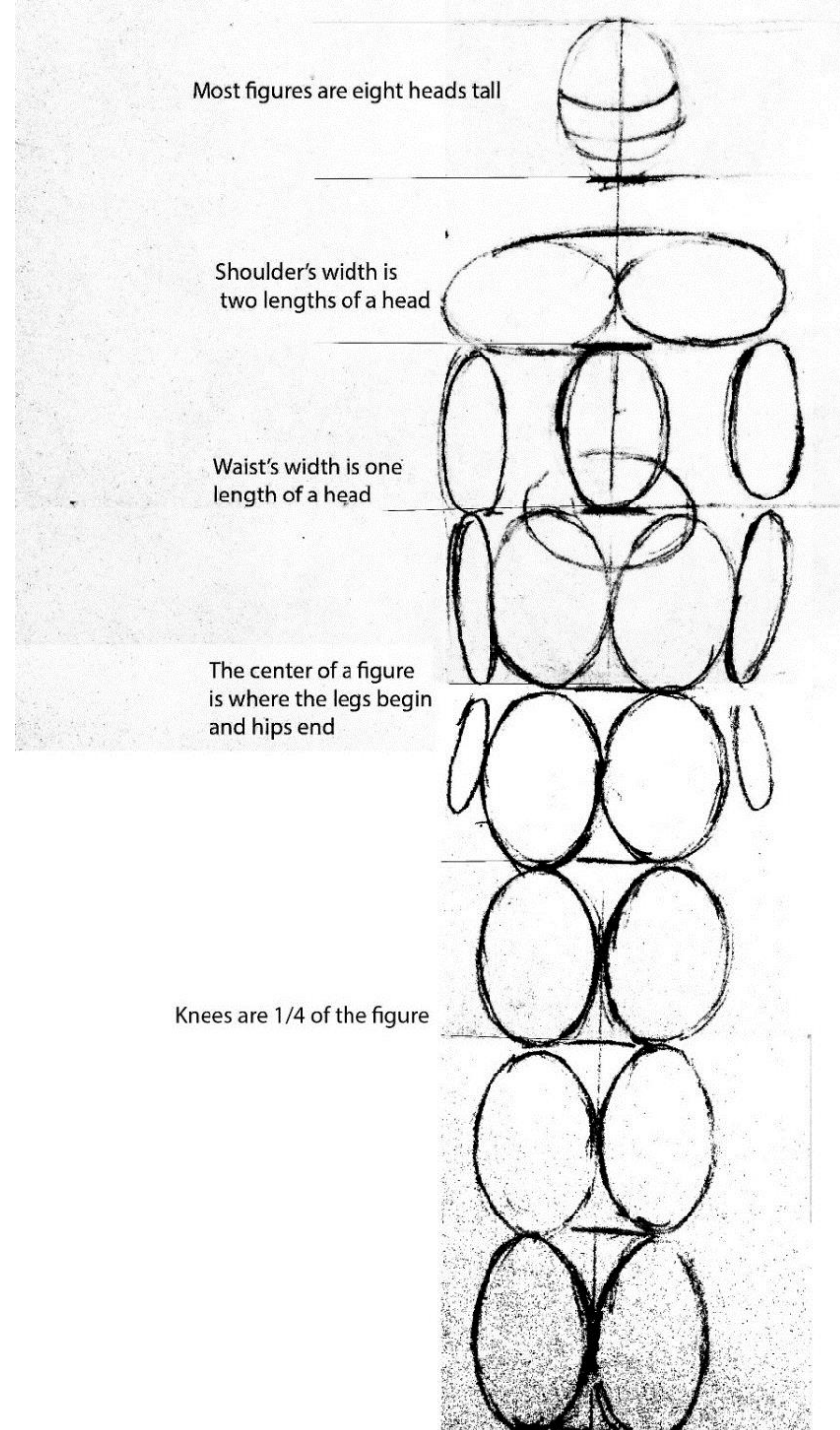
#18 Color wheel in your sketchbook

1. Glue color wheel to the back of your sketchbook
2. Cut around the circle of the color schemes
3. Put a fastener through the center
4. Turn the dial and use throughout the semester to help you come up with color schemes for your projects

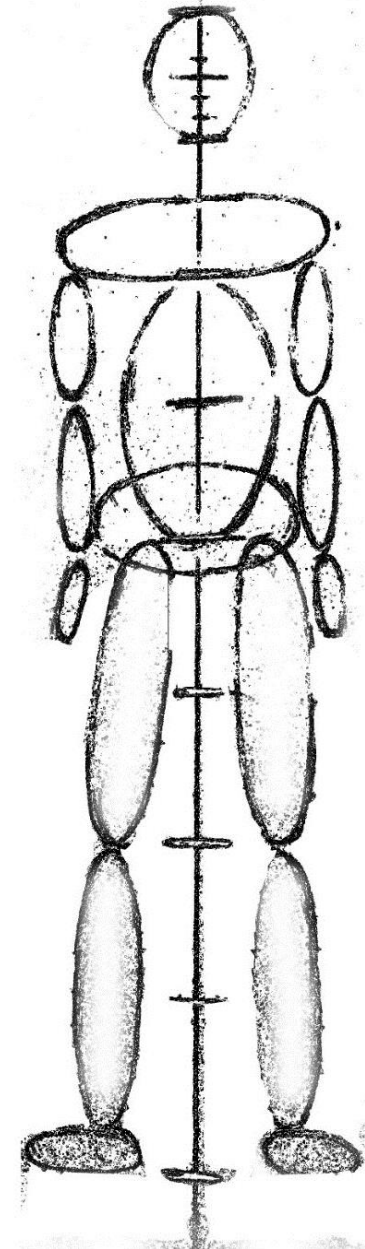


#19 Human Proportions

Measure 8 inches and draw this:



Draw this next to it:



Color, Emotion & knowledge:

https://www.youtube.com/watch?v=L1CK9bE3H_s&t=139s

- Powerpoint was shown during class
- The next slide is the worksheet.
- On the bottom of the worksheet, use this color emotion guide to help you
 - Use the colors that represent you & your personality
 - Turn in shelf when done

COLORE MOTION GUIDE

	EXCITEMENT <i>PASSION</i> STRENGTH ENERGY BOLD <i>ROMANCE</i>
	CHEERFUL ENTHUSIASTIC FUN CONFIDENCE ENERGY PLAYFUL
	HOPE <i>FRIENDSHIP</i> WARMTH CLEAR OPTIMISM <i>JOY</i> WEALTH
	GROWTH HARMONY HEALTH LUCK NATURE <i>PEACEFUL</i> WEALTH
	TRUST LOYALTY STRENGTH DEPENDABLE CONFIDENT
	DEPENDABLE STABLE DEPTH NATURE <i>COMFORTABLE</i>
	<i>ELEGANCE</i> POWER <i>FORMAL</i> SOPHISTICATED <i>STYLE</i> STRONG
	BALANCE FORMALITY NEUTRAL <i>RESPECT</i> <i>CALM</i> SUBTLETY

Color Matching Worksheet:

- Referring to previous slide

Name _____ period ____ **Color Matching Quiz**

Write the letter for which the answer applies next to the numbered question in the blank

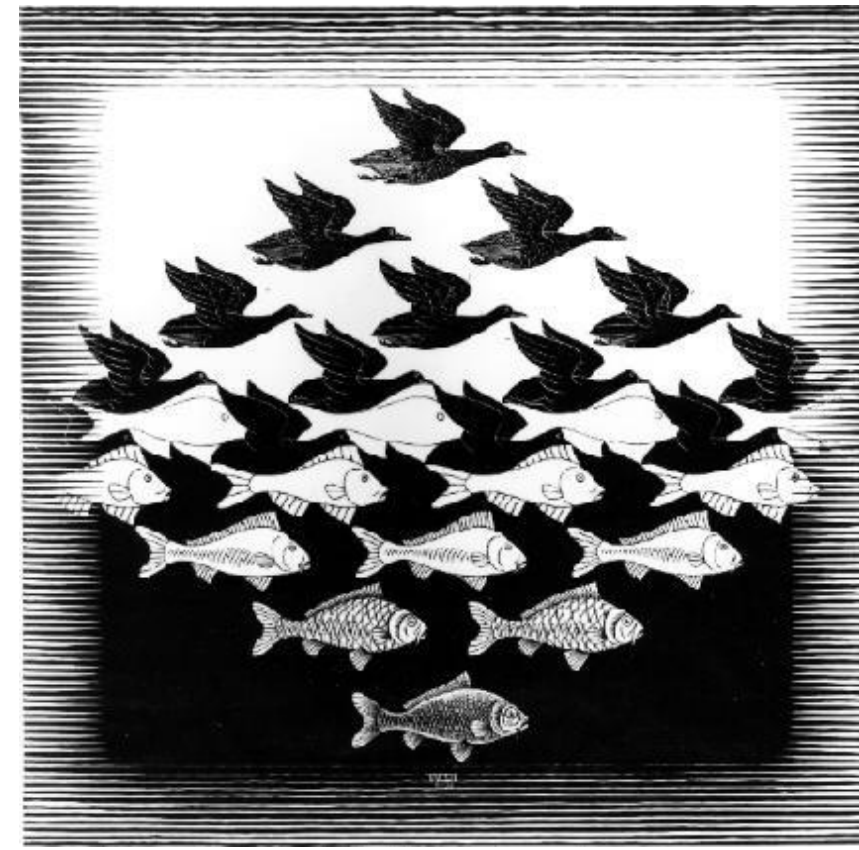
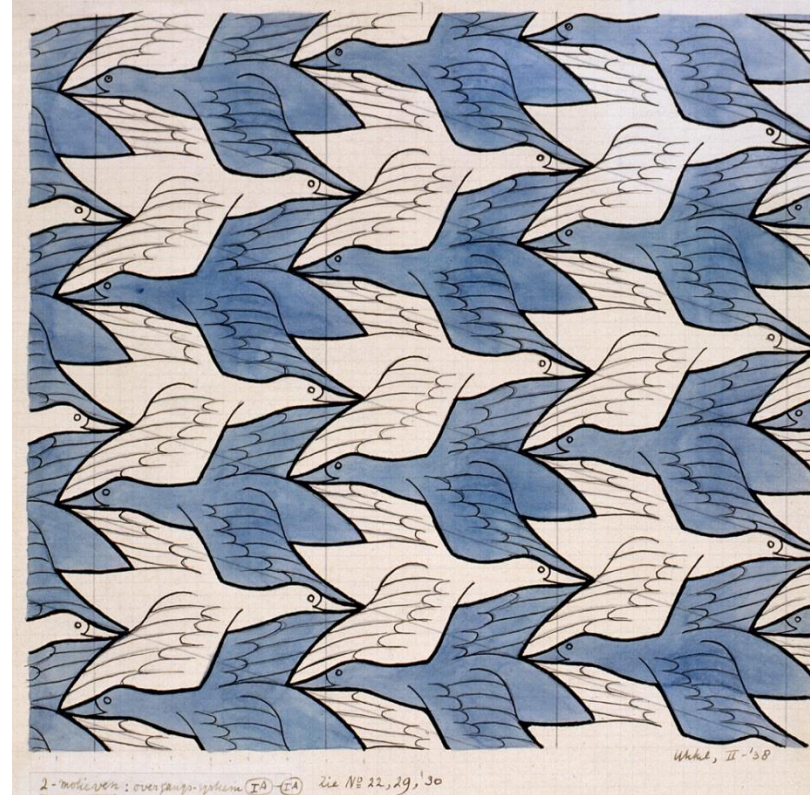
1. _____ What is it called when we see light waves absorbed or reflected by everything around us.	a. duo-tone printing
2. _____ The colors that make up all the other colors are what?	b. dull
3. _____ What are the primary colors for printing?	c. green, purple & orange
4. _____ What are the primary colors for light?	d. Categories of color: red, yellow, blue, orange, purple, green
5. _____ What are the primary colors for paint pigment?	e. shade
6. _____ What are the secondary colors?	f. spot color
7. _____ What are the intermediate/tertiary colors?	g. red, green & blue
8. _____ What colors are opposite colors on the color wheel?	h. Translucent
9. _____ What color scheme are reds, oranges and yellows together?	i. red-orange, green-yellow, blue-violet
10. _____ What color scheme are blues, greens and violets together?	j. split complementary
11. _____ What color scheme is 3 colors apart from each other on the color wheel?	k. tone
12. _____ What color scheme is 2 colors apart from each other on the color wheel?	l. color
13. _____ What color scheme includes a color and its opposite's 2 neighbors?	m. value
14. _____ When you mix complementary colors together it becomes what?	n. Triadic
15. _____ What is color + white?	o. complementary colors
16. _____ What is color + black?	p. tint
17. _____ What is color + grey?	q. primary
18. _____ What is color in variations of lightness and darkness	r. half tone
19. _____ What is hue?	s. Tetrad
20. _____ What carries information about light to your brain.	t. warm colors
21. _____ What does the retina's rod cells let you?	u. see color
22. _____ What does The retina's cone let you?	v. optic nerves
23. _____ What is a printing process in which gradation of tone is obtained by a system of small dots	w. Cyan, Yellow, Magenta & Black (CYMB)
24. _____ What is it called when you print from one printing plate that contains just one matched color of ink?	x. opaque
25. _____ What is it called when you print with 2-4 inks?	y. cool colors
26. _____ When you can't see through a color it is what?	z. see black & white only
27. _____ When you can see through a color it is what?	a2. Red, yellow & blue
28. _____ When you can partially see what is underneath it is what?	b2. Transparent

Write 5 adjectives describing your personality:

Draw a shape with characteristics that is fitting to your personality & choose colors that are fitting to your personality:

#20 Positive & negative space



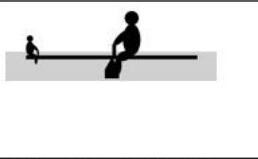
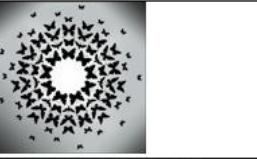
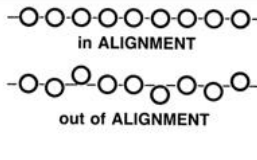







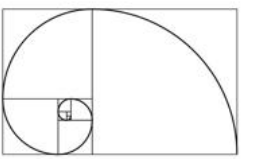



- Create two images that has another image in the negative space. Example M.C. Escher, but you don't need to do an entire page (unless you want to).




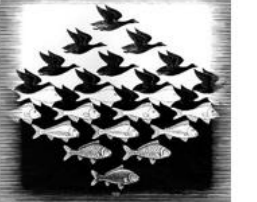

Principles of Design and Art Elements

Name _____ Principle of design and art element worksheet


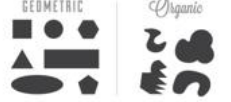


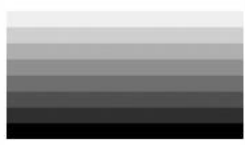



Draw a simple sketch illustrating your understanding of each Principle of design:

Balance: a distribution of equal visual weight	Symmetrical balance: exact features on both sides	Asymmetrical balance: One side seems as if it has more weight	Radial balance: design extending from the center
			
Alignment: an arrangement forming straight line	Emphasis: accentuation of importance-domination	Emphasis: accentuation of importance-focal point	Emphasis: accentuation of importance-contrast
			
Emphasis: accentuation of importance-isolation	Emphasis: accentuation of importance-location	Emphasis: accentuation of importance-convergence	Emphasis: accentuation of importance-unusual
			
Proportion: scaling of objects in relation to each other	Movement: a directional path of movement	Rhythm: repeating strong & weak areas, or repeating noise & silence	Pattern: an orderly repetition of an object
			
Variety: combining contrasting elements to add interest	Contrast: a juxtaposition that accentuates difference	Harmony: art elements appearing agreeable	Unity: a harmonious arrangement of elements; a oneness/wholeness



Unity: wholeness-simplification: simplify the art elements	Unity: wholeness-repetition: repeating similar & exact elements	Unity: wholeness-proximity: limiting negative space	
			

Draw a simple sketch illustrating your understanding of each Art Element:

Line: The path of a moving point	Shape: the contour of a flat object	Form: 3D object having depth	Space: internal/external areas
			
Value: brightness & darkness	Color: an objects chromatic qualities	Texture: The tactile quality of a surface	Type: a verbal communication, but the font style is a visual communication
			

#21 Draw 6 different textures

Example...

Light:



Dark:



- Draw 6 different textures of ways you can create contrasting value with lino printmaking;
 - Draw 3 light sections next to 3 dark sections



#22 Checkerboard Image-positive & negative shapes

- Draw an image and draw a checkerboard on the image.

